

Images Of Glass

photography by james madison thomas



Stained-Glass Me



james madison thomas

Images Of Glass
photography by james madison thomas



John Epright
Stained-Glass Artist

Images Of Glass

photography by james madison thomas

In 2004, I offered to help a friend from church promote his artistry by photographing some of the doors he had designed and constructed in years past. I knew stained glass would make an interesting subject with the variety of colors, textures, and the continually changing interplay with the ambient light of the moment. I am not a professional photographer. At least not yet. There are too many challenges for which I'm unschooled, too much equipment that I will never own or figure out, but I don't mind the label "amateur" in this arena, because in the original sense of the word it defines someone that loves what they are doing. And I do love the entire process of creating pictures. I am not trying to compete with the pros, or God either. When I create photographs, I get to see worlds within worlds, and marvel and applaud Him for the infinite plateaus and crannies of creation, His creation. In fact, there is so much in the way of variability it makes me dizzy. So this little homemade book is what it is, and it's mainly an enterprise I just want to do. Still, deep down, I know I want to touch the hearts of those sharing space on the planet with me. I lost touch with my friend before I got to this point. His name is John Epright and he is an artist with glass & wood. I hope you like seeing his work through my eyes. jmt 5/1/05

ONE

April 15, 2004. Davis Island (Tampa).

Fuji Finepix S602 Zoom, ISO Speed: 200

#17 Shutter:1/180, Aperture: f3.2, Focal Length: 11.6 mm, Brightness: 4.9
#04 Shutter:1/105, Aperture: f2.8, Focal Length: 7.8 mm, Brightness: 3.7
#12 Shutter:1/38, Aperture: f2.8, Focal Length: 7.8 mm, Brightness: 2.2
#14 Shutter:1/20, Aperture: f2.8, Focal Length: 7.8 mm, Brightness: 1.5
#09 Shutter:1/25, Aperture: f3.2, Focal Length: 7.8 mm, Brightness: 4.4
#16 Shutter:1/60, Aperture: f2.8, Focal Length: 7.8 mm, Brightness: 3.0
#15 Shutter:1/50, Aperture: f2.8, Focal Length: 7.8 mm, Brightness: 2.6
#11 Shutter:1/20, Aperture: f2.8, Focal Length: 7.8 mm, Brightness: 3.9
#13 Shutter:1/80, Aperture: f2.8, Focal Length: 7.8 mm, Brightness: 3.3
#10 Shutter:1/170, Aperture: f3.6, Focal Length: 7.8 mm, Brightness: 5.1
#07 Shutter:1/140, Aperture: f2.8, Focal Length: 7.8 mm, Brightness: 4.1
#18 Shutter:1/27, Aperture: f2.8, Focal Length: 7.8 mm, Brightness: 1.8
#08 Shutter:1/60, Aperture: f2.8, Focal Length: 7.8 mm, Brightness: 2.6

Epright Doors #17



james madison thomas

Epright Doors #4



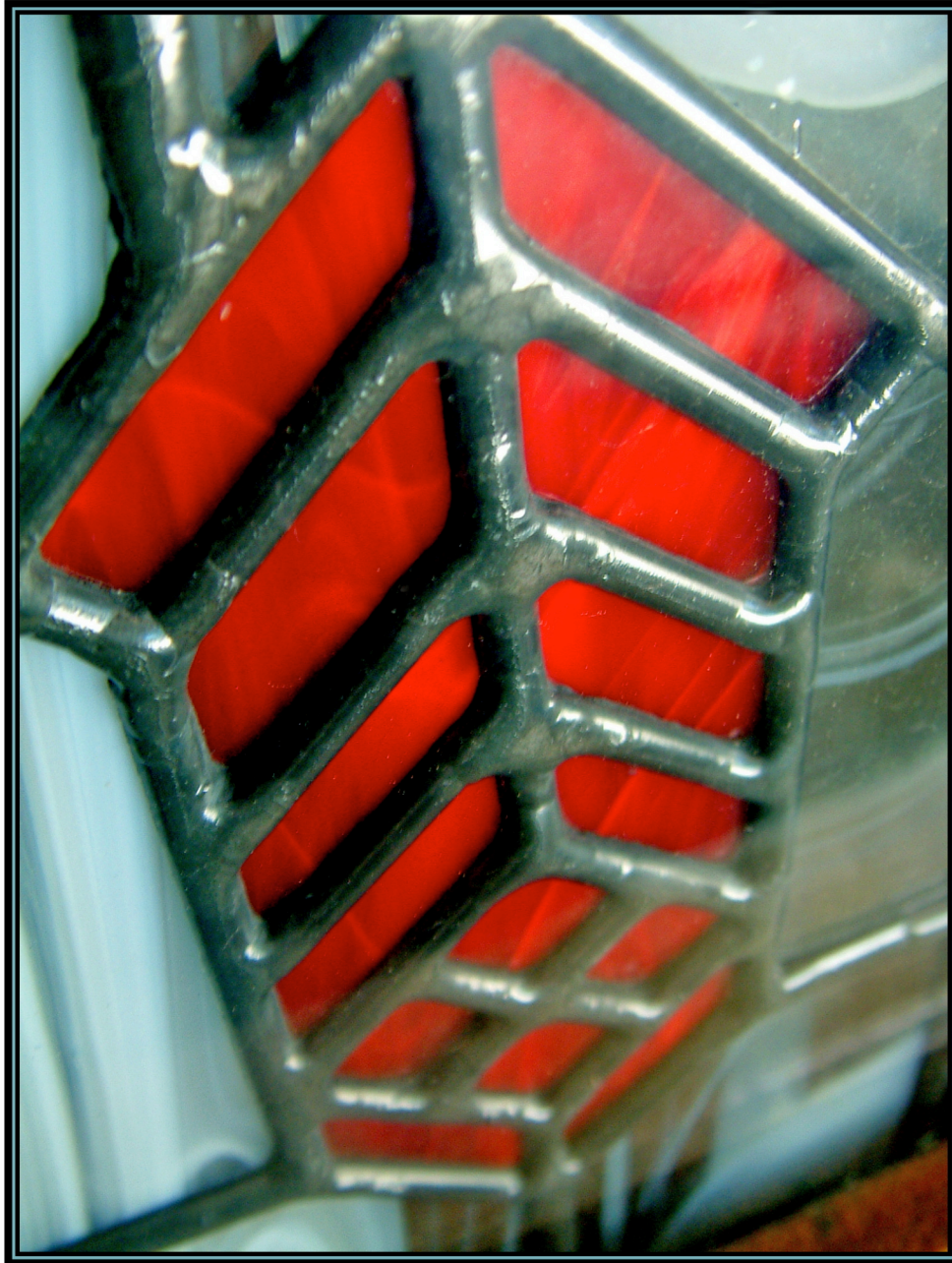
james madison thomas

Epright Doors #12



james madison thomas

Epright Doors #14



james madison thomas

Epright Doors #9



james madison thomas

Epright Doors #16



james madison thomas

Epright Doors #15



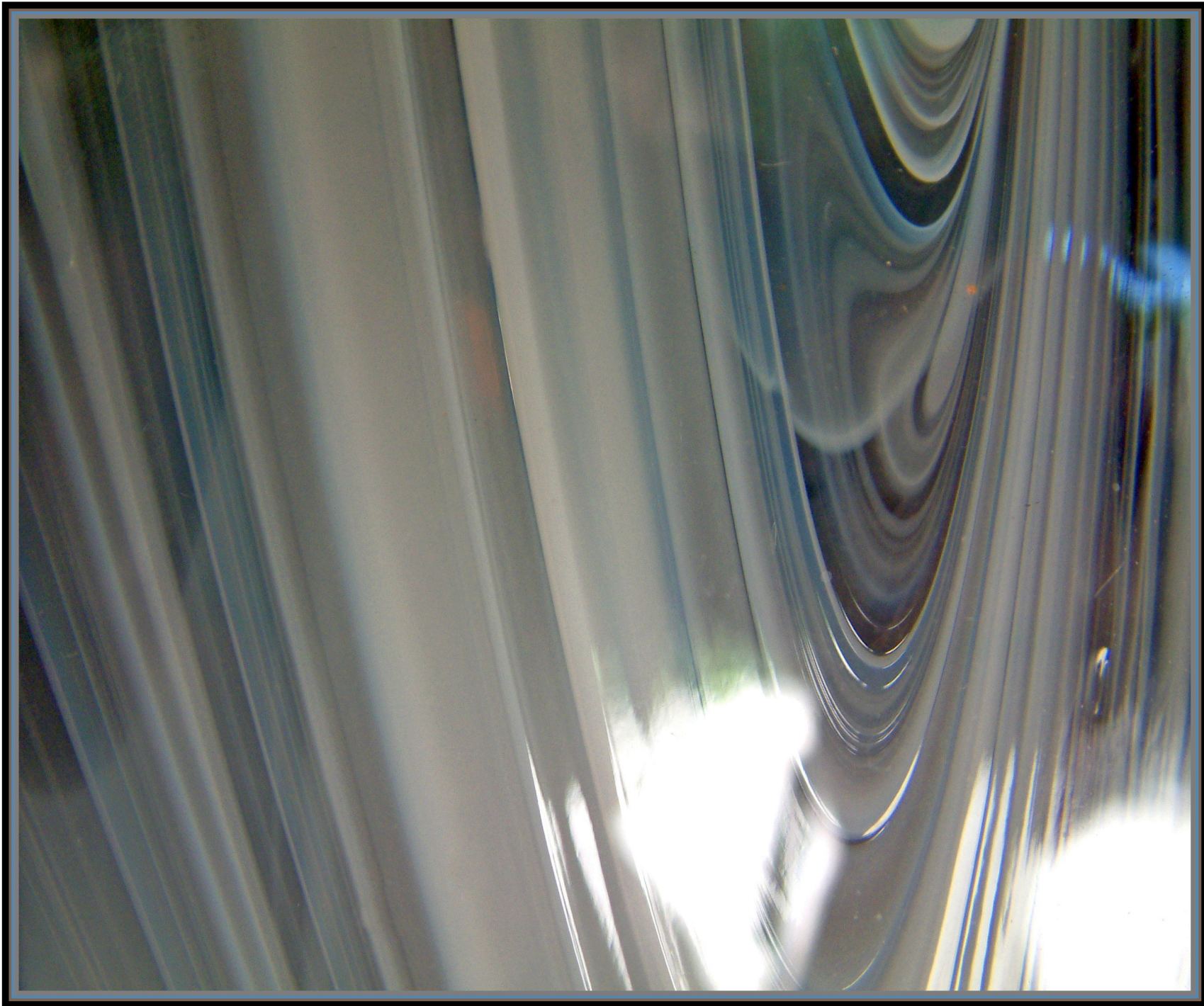
James Madison Thomas

Epright Doors #11



james madison thomas

Epright Doors #13



james madison thomas

Epright Doors #10



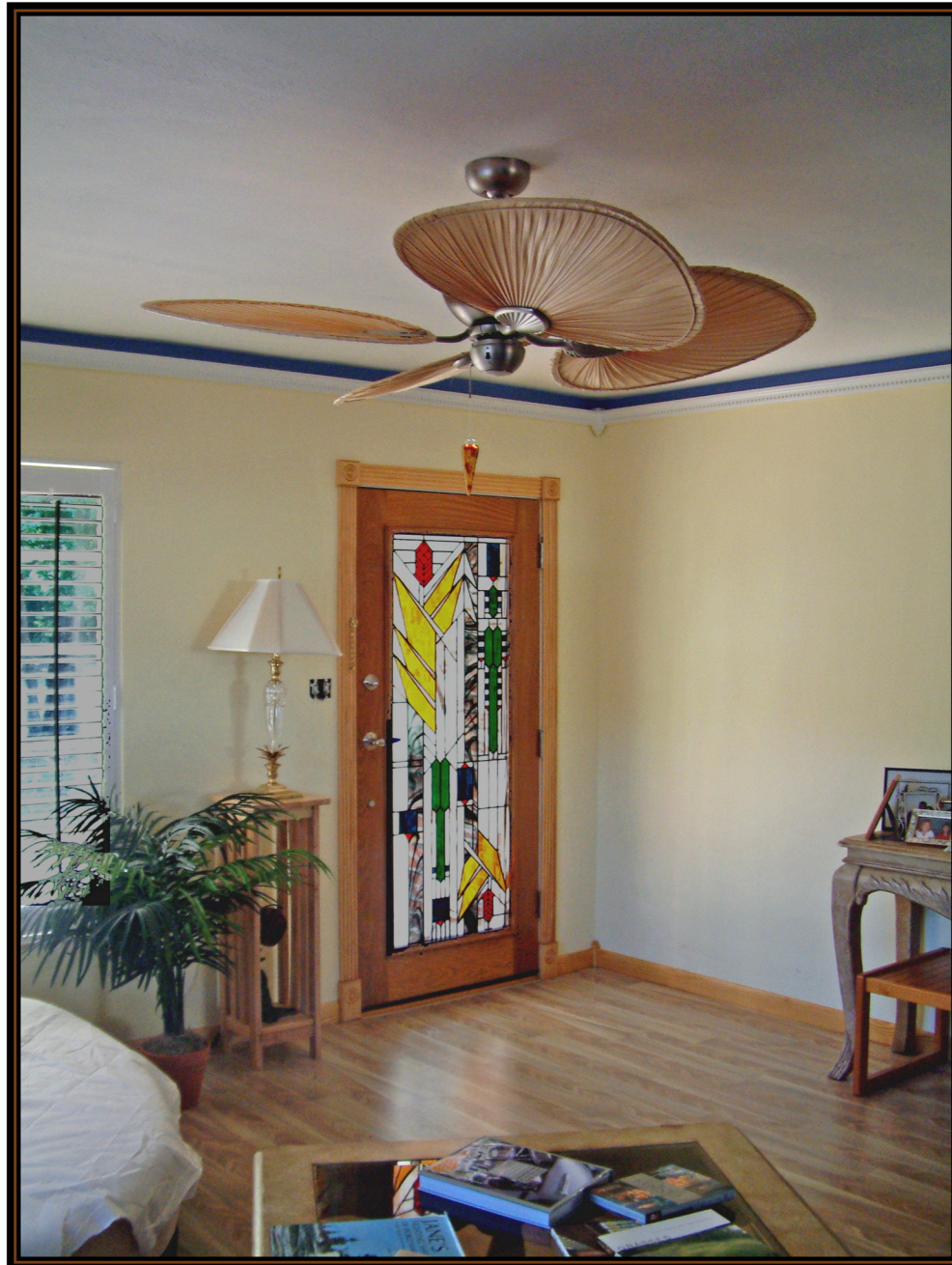
james madison thomas

Epright Doors #7



james madison thomas

Epright Doors #18



james madison thomas

Epright Doors #8



james madison thomas

TWO

April 2, 2004. Snell Isle, St. Petersburg
Fuji Finepix S602 Zoom, ISO Speed: 200

#29 Shutter:1/125, Aperture: f3.2, Focal Length: 23.9 mm, Brightness: 2.5
#23 Shutter:1/60, Aperture: f2.8, Focal Length: 8.9 mm, Brightness: 2.8
#26 Shutter:1/13, Aperture: f2.8, Focal Length: 7.8 mm, Brightness: 0.7
#28 Shutter:1/150, Aperture: f3.2, Focal Length: 7.8 mm, Brightness: 4.6
#05 Shutter:1/140, Aperture: f2.8, Focal Length: 13.9 mm, Brightness: 4.1
#22 Shutter:1/70, Aperture: f2.8, Focal Length: 10.6 mm, Brightness: 3.1
#27 Shutter:1/180, Aperture: f3.2, Focal Length: 7.8 mm, Brightness: 2.6
#25 Shutter:1/60, Aperture: f2.8, Focal Length: 23.9 mm, Brightness: 3.0
#20 Shutter:1/60, Aperture: f2.8, Focal Length: 7.8 mm, Brightness: 3.0

Epright Doors #29



james madison thomas

Epright Doors #23



james madison thomas

Epright Doors #26



james madison thomas



Epright Doors #5



james madison thomas

Epright Doors #22



james madison thomas

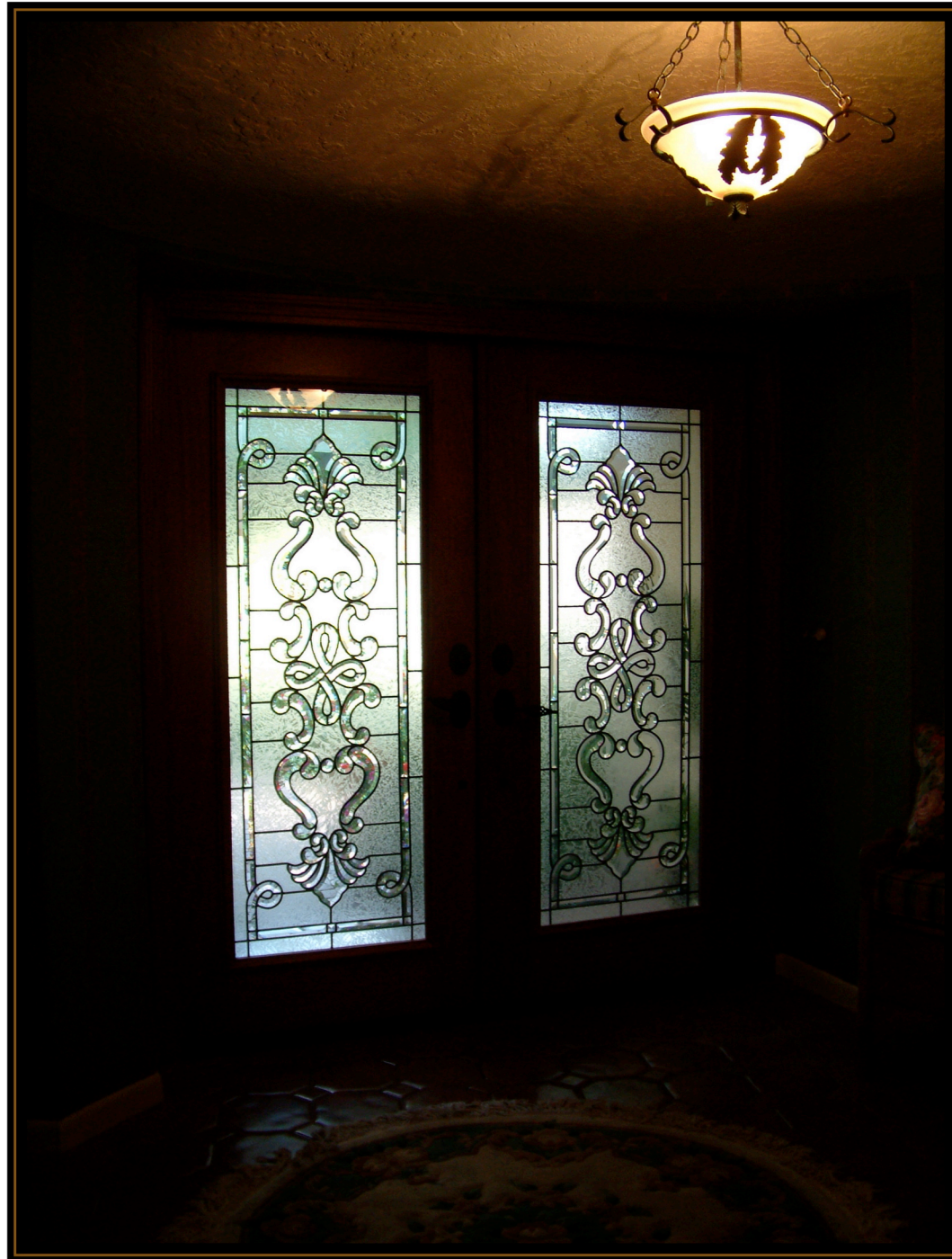


Epright Doors #25



james madison thomas

Epright Doors #20



james madison thomas

THREE

March 20, 2004. Clearwater

Fuji Finepix S602 Zoom, ISO Speed: 200

#-J Shutter: 1/250, Aperture: f4.0, Focal Length: 28.6 mm, Brightness: 6.0
#-A Shutter: 1/170, Aperture: f3.2, Focal Length: 7.8 mm, Brightness: 4.7
#-F Shutter: 1/250, Aperture: f4.0, Focal Length: 11.6 mm, Brightness: 6.0
#-D Shutter: 1/170, Aperture: f3.2, Focal Length: 7.8 mm, Brightness: 4.7
#01 Shutter: 1/280, Aperture: f4.0, Focal Length: 7.8 mm, Brightness: 6.1
#-M Shutter: 1/160, Aperture: f2.8, Focal Length: 7.8 mm, Brightness: 4.3
#-H Shutter: 1/140, Aperture: f3.2, Focal Length: 7.8 mm, Brightness: 4.4

Epright DoorJ



james madison thomas

Epright Door - A



james madison thomas

Epright Door F



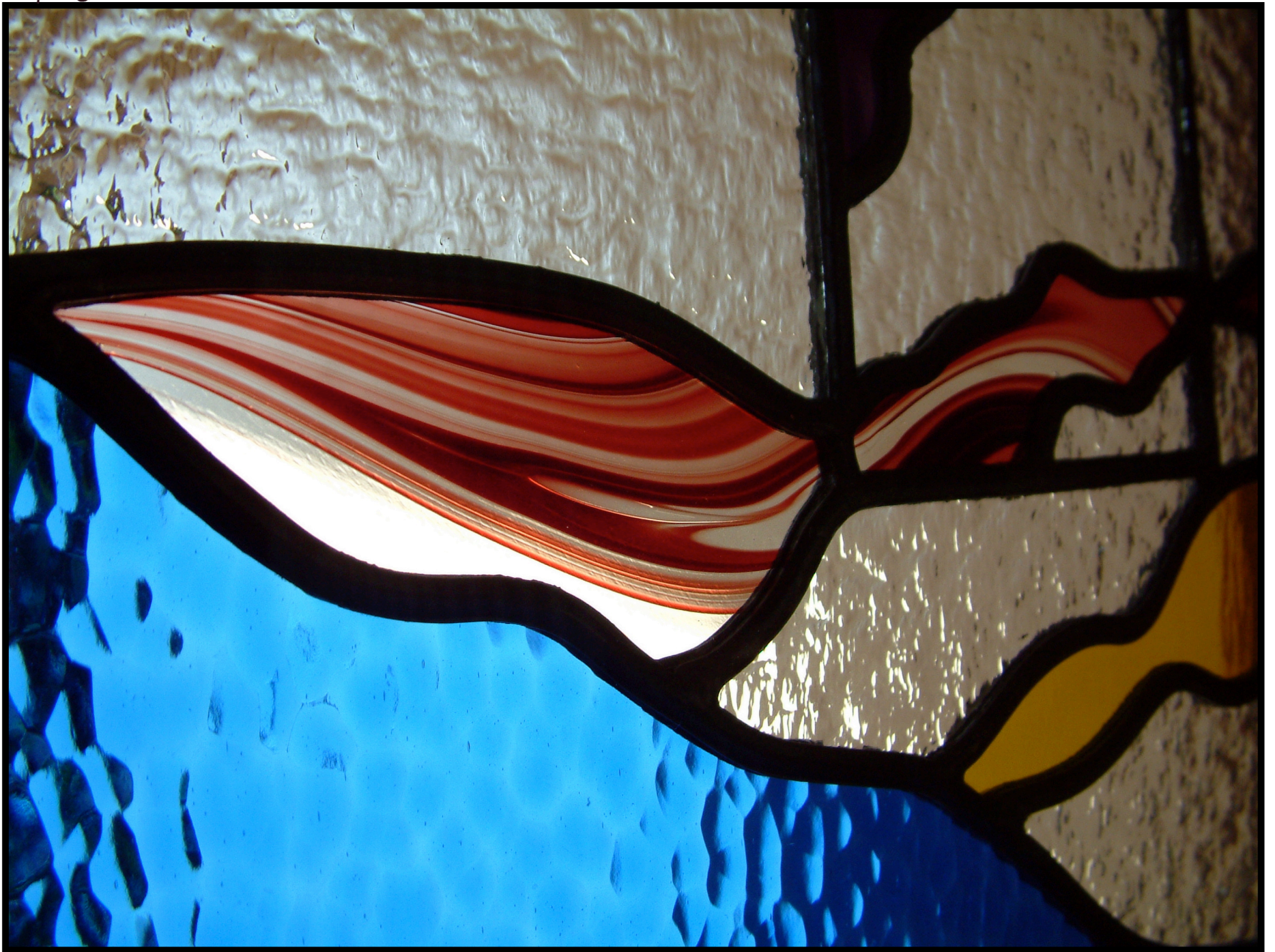
james madison thomas

Epright Door - D



James Madison Thomas

Epright Doors #1



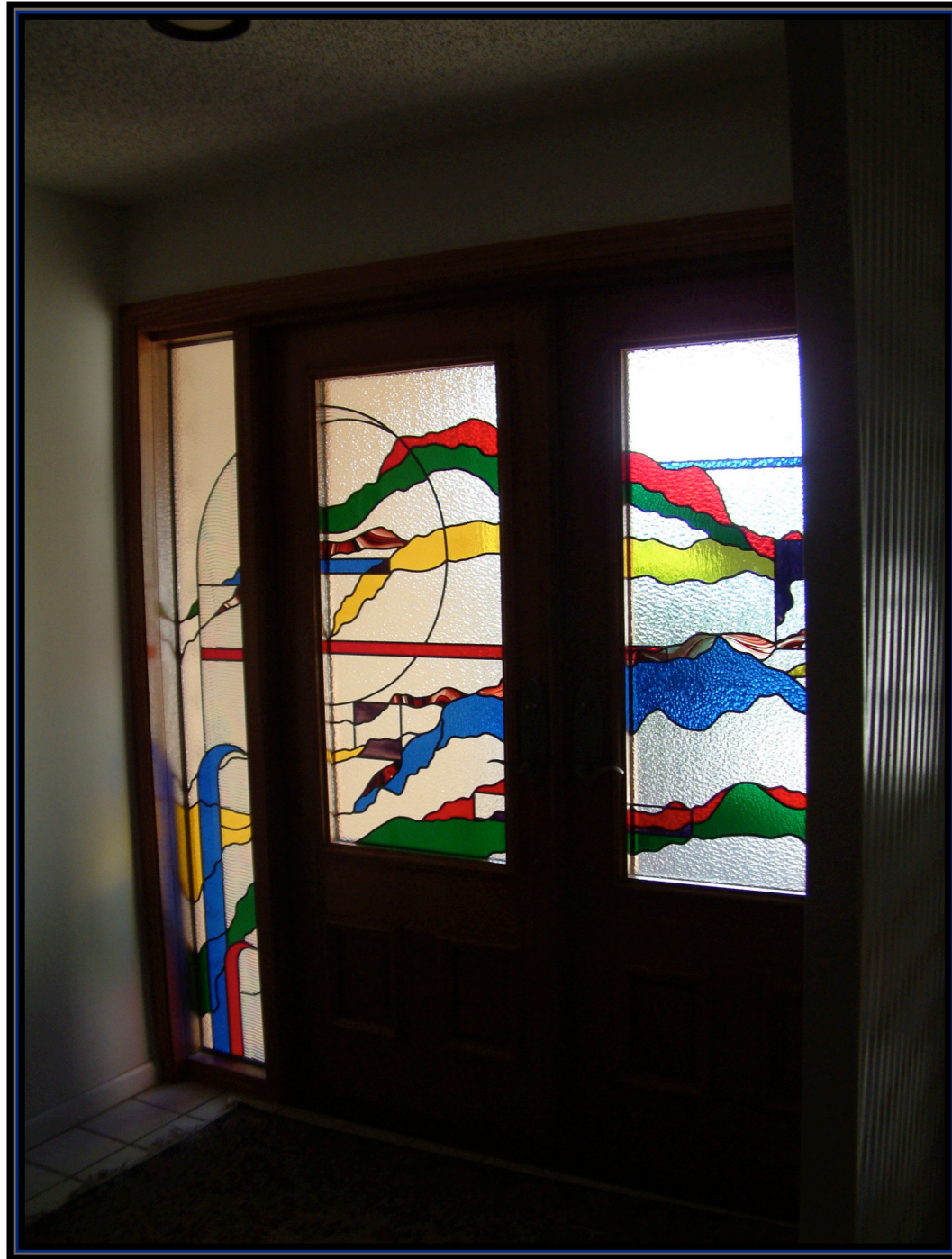
james madison thomas

Epright Door -M



james madison thomas

Epright Door H



james madison thomas

FOUR

April 8, 2004. Seminole

Fuji Finepix S602 Zoom, ISO Speed: 200

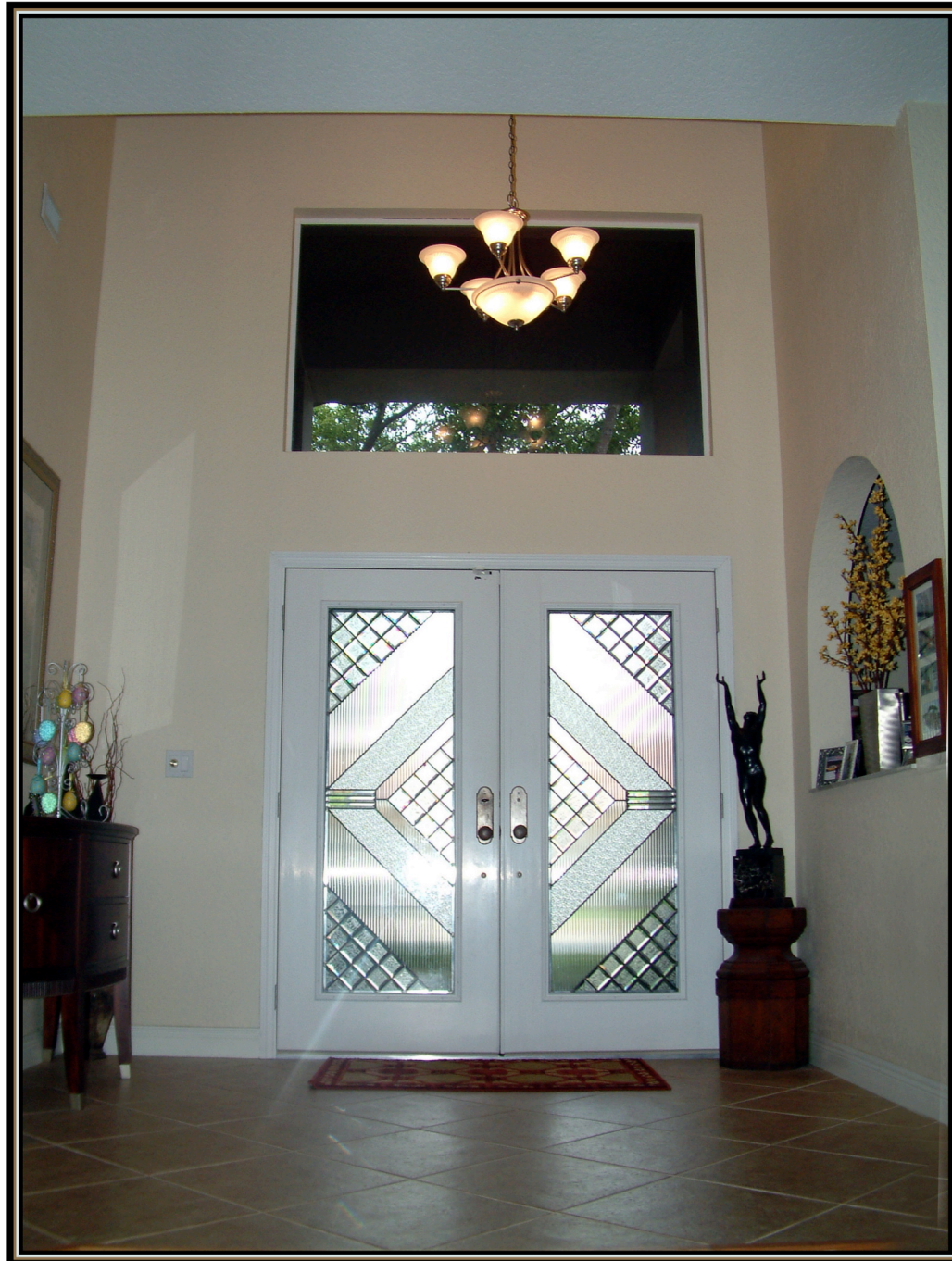
#39 Shutter:1/180, Aperture: f3.2, Focal Length: 10.6 mm, Brightness: 4.8
#30 Shutter:1/210, Aperture: f3.6, Focal Length: 7.8 mm, Brightness: 5.4
#37 Shutter:1/28, Aperture: f2.8, Focal Length: 7.8 mm, Brightness: 1.9
#31 Shutter:1/25, Aperture: f2.8, Focal Length: 7.8 mm, Brightness: 1.5
#36 Shutter:1/26, Aperture: f2.8, Focal Length: 7.8 mm, Brightness: 1.7
#35 Shutter:1/45, Aperture: f2.8, Focal Length: 7.8 mm, Brightness: 2.5
#38 Shutter:1/200, Aperture: f3.2, Focal Length: 19.9 mm, Brightness: 4.9
#03 Shutter:1/240, Aperture: f4.0, Focal Length: 11.6 mm, Brightness: 5.9
#34 Shutter:1/180, Aperture: f3.6, Focal Length: 7.8 mm, Brightness: 5.1
#33 Shutter:1/400, Aperture: f4.5, Focal Length: 7.8 mm, Brightness: 6.9
#32 Shutter:1/340, Aperture: f4.0, Focal Length: 7.8 mm, Brightness: 6.4
#06 Shutter:1/20, Aperture: f2.8, Focal Length: 7.8 mm, Brightness: 1.3
#40 Shutter:1/105, Aperture: f2.8, Focal Length: 12.7 mm, Brightness: 3.7

Epright Doors #39



james madison thomas

Epright Doors #30



james madison thomas

Epright Doors #37



james madison thomas

Epright Doors #31



james madison thomas



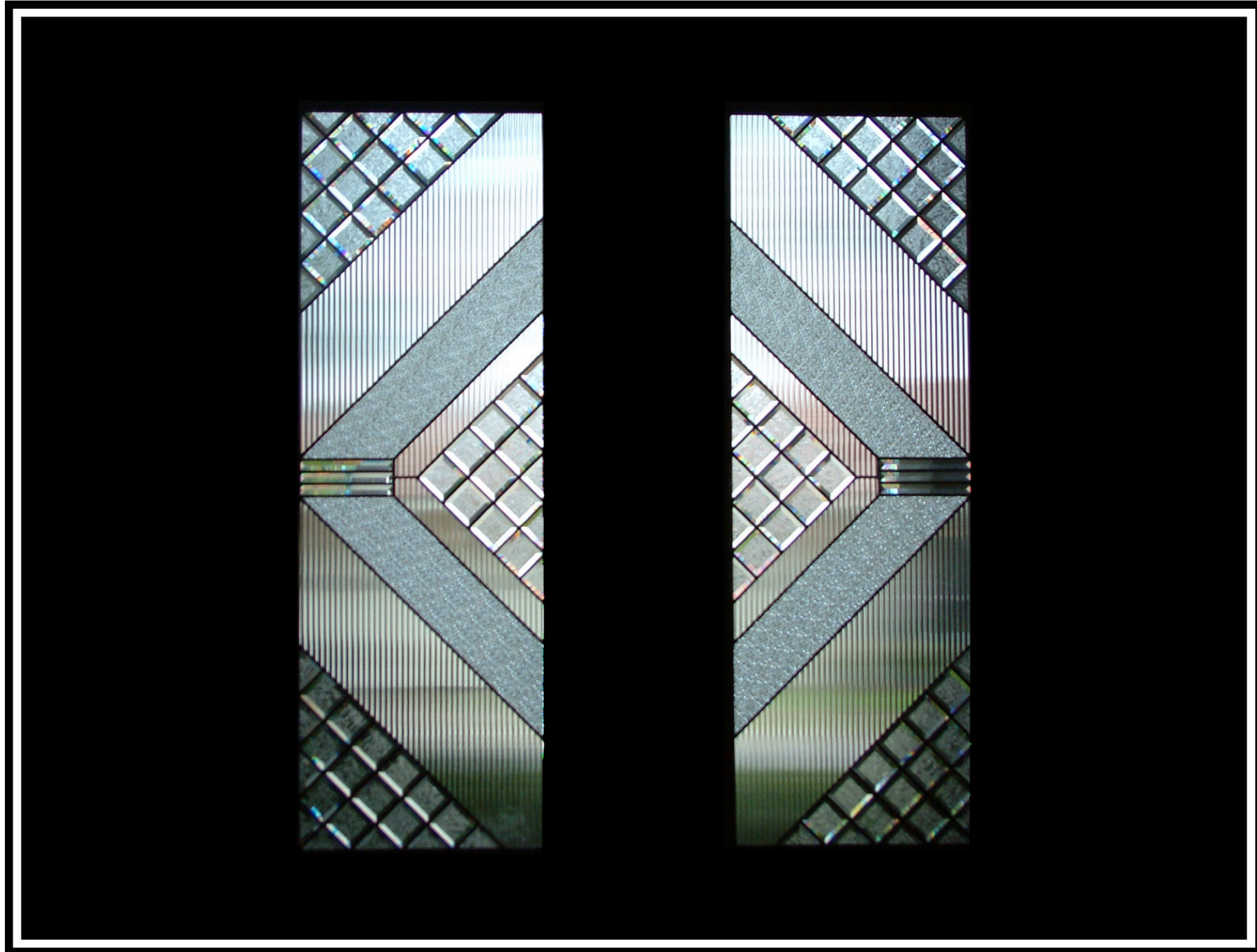


Epright Doors #38



james madison thomas

Epright Doors #3



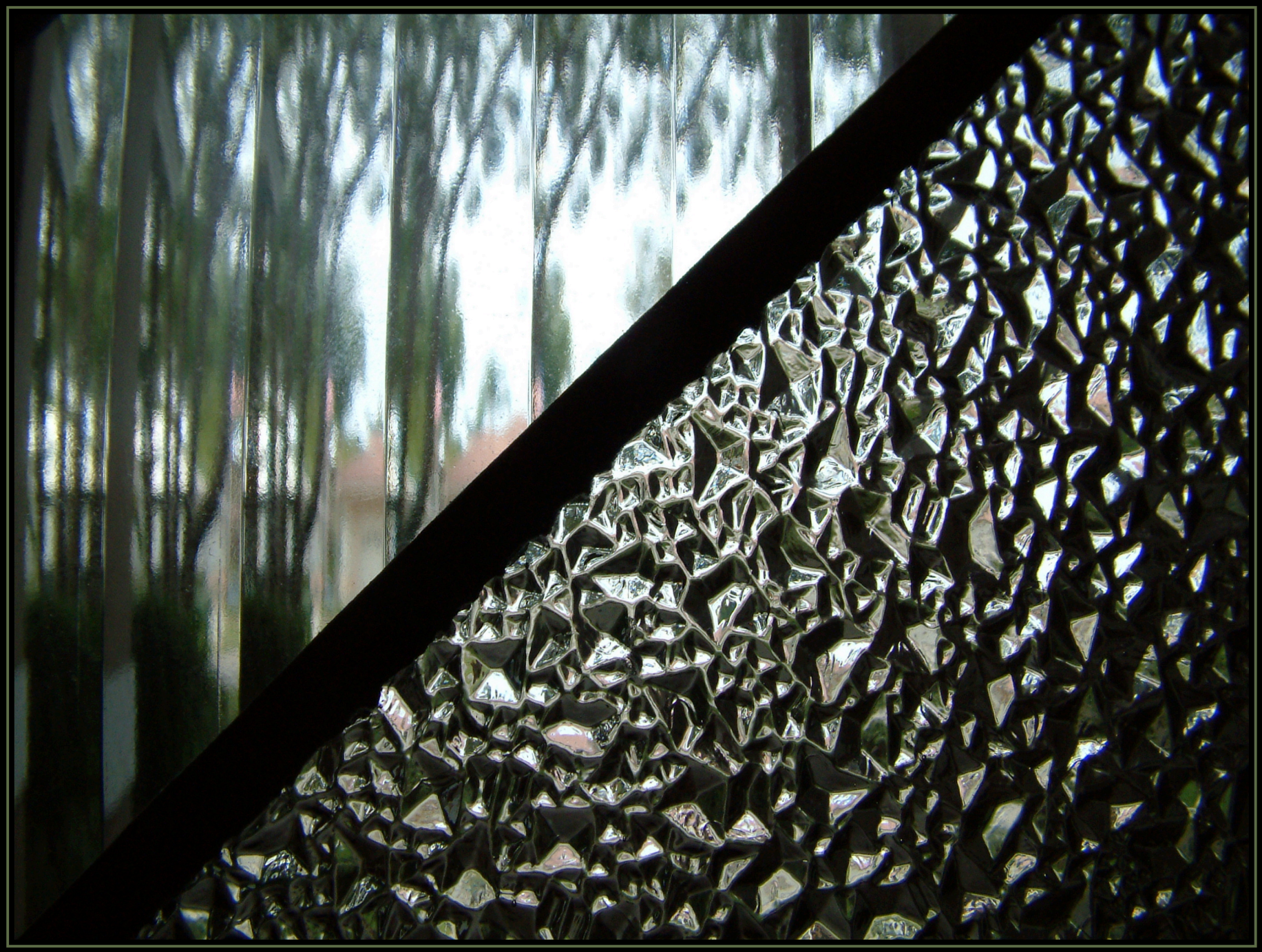
james madison thomas

Epright Doors #34



james madison thomas

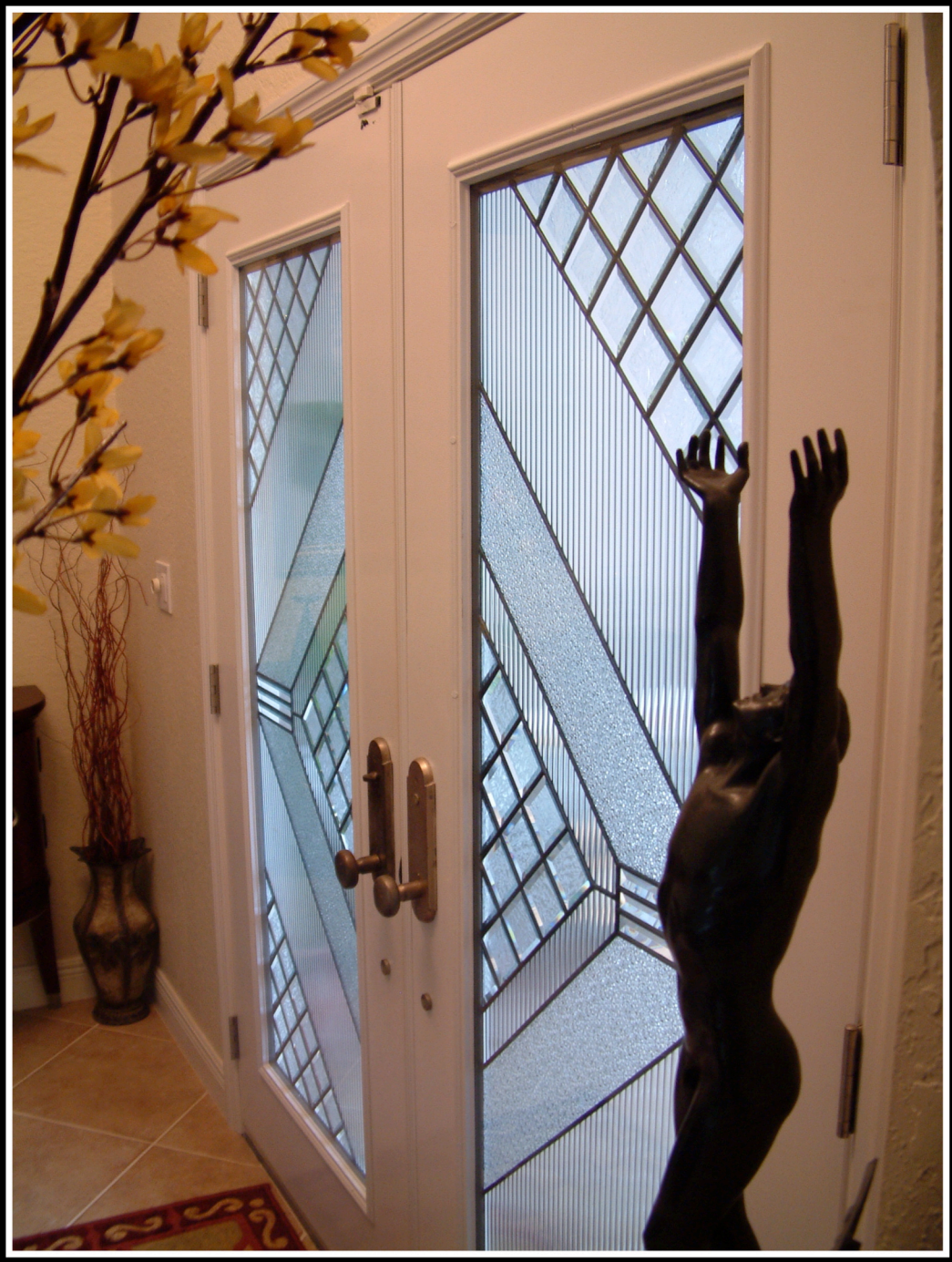
Epright Doors #33



james madison thomas



Epright Doors #6



james madison thomas

Epright Doors #40



james madison thomas

Custom Musical & Photographic Services
St. Petersburg, Florida



JAMES MADISON THOMAS

james.madison.thomas@mac.com

<http://homepage.mac.com/james.madison.thomas>
use password = delight



cell : 727-688-5874